

TAILSPINNERS

Volume 50 Issue 12

September 2005

Editor: Adam Bryant



October MEETING

PLEASE NOTE!! The October meeting will be held at Ridge View Academy on Tuesday October 4, 2005 at 7:00pm.

If the gate is closed, drive to the right of the small building and press the button on the speaker box and when prompted state your name and state that you are with Mile Hi RC and are coming in for the club meeting. When you get to the main building, you will have to sign in, turn in your car keys, and get a visitors badge. They will then direct you to the meeting room. Come a little early to get through the security routine.

RIDGE VIEW ACADEMY IS A NO SMOKING FACILITY. SMOKING IS NOT ALLOWED ANYWHERE ON THE PROPERTY.

FLIGHT LOG FOR THE SEPTEMBER MILE HI RC MEETING

BOARD MEETING MINUTES

1. Approve minutes
2. Treasurers report
 - a. Checkbook – balance \$xxx
 - b. Investments – balance as of 8/30/05 \$xxx. Invested an additional \$xxx on 8/1/05
 - c. Moved funds from regular checking to Ameritrade checking. Ameritrade checking balance is \$xxx
 - d. 3 new members
 - e. Event income: Dogfight Over Aurora, gross \$xxx, expenses \$xxx, net \$xxx
 - f. Approximately \$xxx in liabilities. \$xxx for the AMA field improvement grant, and \$xxx for the field lease.
3. Membership report
 - a. Renewal letters
4. Field Acquisition Report
 - a. Field transition team
 - b. Ridge View Academy
 - i. Meeting with State August 26th
 - ii. Did not go well. We have been assuming that Rite of Passage has been leasing the land from the State. The fact is that all buildings are the property of the State. Any arrangement we make would be with the State of Colorado, not Ridge View Academy. The 2 people who could actually make a decision were not there. Much of the land we thought would make a good field location is under lease to other parties. We proposed a 20 acre site on the southeast corner of the site. **ALL** of the Ridge View people attending (administration, board, faculty, etc.) were very positive about our plans, but the person representing the State was very non-committal. He was only collecting information.
 - c. Alternatives
 - i. We have a meeting with Melissa Feeder to discuss Colorado Land Board land to see what possibilities exist there.
5. Field lease
 - a. Extended to October 2006, however we have not received it as of yet.
 - b. Reservoir in Parker. Still at least 2 years away.
6. Safety report
7. FW2005 Events
 - a. Dogfight Over Aurora, August 6th. Net income \$xxx.

- b. Normandy Elementary School Cub Scouts Sept. 9th. Roman Flyer and others will give an electric flight demo, and a talk about airplanes and modeling.
 - c. Aeroworks planning report. Sept. 17
 - i. Gary Jones will CD event.
 - ii. George has a signup sheet for pilots.
 - iii. George has a signup sheet for volunteers.
 - iv. Pilots must either use the same airplane for all events, or pay an additional \$10 for each additional airplane they use.
 - v. Joe Vedovati will MC the event
 - vi. Response on the CP website has been very good, so we may need to make more time available for buddy box flying.
 - vii. Plaques and trophies have been ordered.
 - viii. There is a pre-registration on the website for pilots and volunteers.
 - d. Wings Over Rockies Aeromodelling Expo.
 - i. Randall has had a meeting with them. The AMA event sanction has been sent in to the AMA. This is a non-flying event sanction.
8. Field maintenance
- a. Two "car port" shelters purchased for \$106.94
 - i. Need to get two heavy plastic tubs to hold the covering and metal joiners.
9. Elections
- a. Nominations for office
 - i. President John Neumeier
 - ii. Vice President Chuck Brant
 - iii. Secretary Anthony Puca
 - iv. Treasurer John Ballman
 - v. Board members (3 elected)
 - 1. Gary Brady
 - 2. Chris Branam
 - 3. Adam Bryant
 - 4. Randall Eaker
 - 5. Jim Lewis
 - 6. Rocco Mariani
 - 7. Jerry Warrington
 - b. October 1st new officers take over
10. Year end banquet
- a. Ridge View Academy Restaurant September 24th at 7:00pm
 - i. Per person: \$18.00
 - ii. Reception: Hot & cold finger foods
 - iii. First course: Crab cake in saffron sauce
 - iv. Second course: Caesar salad
 - v. Entrée: Grilled chicken breast with mango salsa, long grain & wild rice pilaf, seasonal vegetable medley
 - vi. Dessert: New York cheesecake with homemade hot fudge sauce
 - b. Program ideas
 - i. Doesn't necessarily have to be model related.
 - ii. Installation of new officers.
 - c. George suggested that we give a \$100 gift certificate to a restaurant to John Neumeier to thank him for all his hard work in trying to find us a new field. Motion was made, seconded, and approved to do so.
 - d. Who is qualified for the drawing?
11. Metro Denver Modelling Council
- a. Organization is being resurrected. Do we want to participate? If so, we need someone from our club to be our representative on this council.
 - b. Purpose is to coordinate modeling activities in the Denver area.
 - c. We will ask at the meeting if someone would like to serve as our representative.
12. Meeting gift certificate drawings
13. Program this month
- a. Randall Eaker Homebuilding RV-7.
14. Future board meetings
- a. September 27 George Kerr
 - b. October 27?
 - c. November 29?
 - d. December 27?

15. Call members to encourage meeting attendance.
16. September Club meeting Sept. 6th at Ridge View Academy
17. October Club meeting Oct. 4th at Ridge View Academy

GENERAL MEETING MINUTES

1. Call to Order 7:06 Pm George Kerr
2. Welcome and Introductions George Kerr
 - a. Introduce officers and Board members
 - b. New members: Ben Jones and Wade Kloos.
 - c. Wade would like to start manufacturing giant scale models.
3. Do we have a Quorum? (10% of voting members needed 14-15) Adam Bryant
 - a. Yes we have a quorum
4. Read and Approve Last Months Minutes Adam Bryant
 - a. Minutes approved
5. Treasurers Report Jerry Warrington
 - a. Checkbook balance \$xxx
 - b. Dogfight Over Aurora \$xxx
 - c. Investment balance \$xxx
 - d. Annualized gain 16.6%
 - e. Outstanding liability for the AMA Field Improvement Grant \$xxx
 - f. Treasurers report accepted
6. Committee Reports
 - a. Membership Report Randall Eaker
 - i. 170 members. Up approximately 15 from last year.
 - b. Contest Committee Report
 - i. Dogfight Over Aurora August 6th
 - ii. Normandy Elementary School Cub Scouts September 9th.
 - iii. Aeroworks Fun-Fly Update. September 17, 2005
 1. Pilot Sign up list
 2. Volunteer Sign up list
 - a. There is a pilot and worker sign up on our website.
 3. Event agenda
 4. Ridge View is donating all the food for the event and will be there to cook it.
 5. Check with your company to see if they will match donations made to CP of Colorado which is a 501c3 organization.
 6. Rocco has put forth the challenge that he will match up to \$500 in club member donations.
 - iv. Wings Over the Rockies Aeromodeling Expo. January 14
 1. The coordinator for the event has resigned. The museum curator will take on this responsibility.
 2. We need volunteers from our club to help organize the event.
 3. The event will be listed in the AMA magazine.
- c. Field Maintenance Report Denny Edwardson
 - i. We are out of weed killer and Denny will get more. If you are at the field and see weeds, pick up a bottle of weed killer and spray them.
 - ii. Volunteers for the 2006 maintenance were announced.
 - iii. Two Car Port Shelters purchased to provide additional shade at events. \$106.94
 1. We need to get two bins to hold the parts and canopies.
- d. Flying Safety Committee Report Chuck Brant
 - i. Near misses!! Pay attention to what you are doing. Communicate!!
- e. Field Acquisition Report John Neumeier
 - i. Meeting with State August 26th
 1. There was one person from the State and several members of the Ridge View board and staff.
 2. Our presentation consisted of our history with Ridge View and what we have been doing to create a relationship with them, then our proposed move to the Ridge View property.
 3. The person attending from the State was not someone who can make a decision.
 4. We would actually lease the land from the State.
 5. We do still have very strong support from members of the Ridge View board and staff.
 - ii. George and John met with the Colorado Land Trust today to see if there were any possible land parcels available.

=== END OF MINUTES FOR THE SEPTEMBER MEETING ===

TIPS FOR BEGINNERS

from the Prop Masters RC Club, Downers Grove IL

Tips and Hints

by Larry Dudkowski

This column is a collection of things I learned while looking up other things. Sometimes I run across hints, tips, or articles that aren't big enough for a whole column but are interesting enough to pass along, so here they are.

- Voltage is a critical factor in determining propeller speed in an electric model. I tried to fly my A-10 using a two-cell Li-Poly pack (7.4 volts 1200 mA). It promptly floundered into the ground. I switched to a six-cell Ni-Cd pack (8.4 volts 600mA) and found that I had a good performing aircraft. The same was true for my Tiger 400. Just switching from a two-cell (7.4 volts) to a three-cell (11.1 volt) Li-Poly made all the difference in the world. Simply put, it is battery voltage that determines the propeller speed and therefore causes aircraft speed. It is battery capacity (mA) that determines the flight time.

- The next time you out grocery shopping check out the stationary section of the store. Look in the section where the rulers and protractors are. Pick up a set of small triangles. They usually come in a set with a 45° and 60° angle. They work great for squaring up the fins and rudders against the stabilizers and elevators (or any other spot where you need to have a 90° angle). You may find that they will work a little better if you cut off about a 1/2-inch of the 90° corner of each triangle. I also like to use them to position the control horns in relation to the servo arm.

For constant cord wings, set the base of the triangle along the control surface. Slide it along until it aligns with the servo arm and mark the spot on the control. The same is true for the rudder and elevator.

- Here's one for you builders out there—if there are any left. When I have wing-mounted servos, I make some paper tubes to use as guides for the servo wires. Just roll up some stiff paper (typing or printer paper will do) into a tube slightly larger than the servo connector. You want to make sure the connector will pass through the tube easily.

Tape or glue the tube so that it doesn't unwind. Then simply glue the tube to the wing ribs so that you have a conduit between the servo-mounting hole and the points in the wing. Being paper it's easy to cut the excess tube.

Now even with the wing covered you should easily be able to thread the servo leads through the wing to the exit points.

- You want to put a little thought into when you mount your on/off switch. This is especially true for hand-launched models such as Combat airplanes. You want to place the switch in a location that won't be accidentally hit during the launch.

For Combat models, probably the best spot would be on the top of the fuselage just aft the wing. There have been a few instances where the switch was accidentally turned off during the launch. This caused the model to go out of control and crash at full throttle.

If you use a push/pull switch, try this little bit of advice. Set it up so that pull is on and push is off. That way, if anything hits the tab during transport it will not turn the model on and discharge the batteries.

When flying I use a small piece of fuel tubing to hold the switch in the on position. Simply cut a small piece of fuel tubing about the length of the push/pull rod in the on position. Then cut the tubing lengthwise, and you can slip it over the rod.

When ready to power up your airplane, pull the rod out and slip the piece of tubing over the rod between the fuselage and the tip. This will prevent the rod from accidentally being pushed in during handling. This little lesson cost me my Ultra-Stick last summer when the model powered itself off in flight. Believe me there is nothing scarier than flying a model you can't control.

FOR YOU ELECTRONIC TINKERERS...

from the Woodland/Davis Aeromodelers, Woodland CA

Power Switch Design [\(view the switch\)](#)

by Ken Anderson

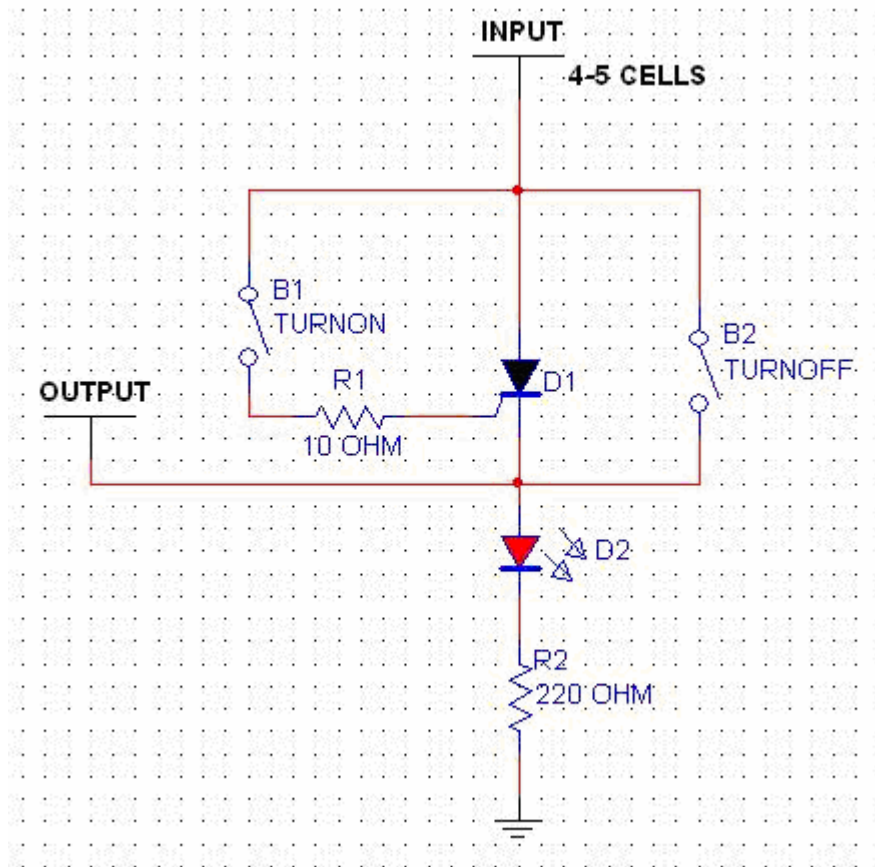
The power switch of your model is a critical aspect of the model's electronic system; if it fails you are in trouble! The switch we have designed is much more reliable than a standard mechanical switch because it has no mechanical elements that can fail resulting in a no-power situation, and thus could prevent a major crash.

The switch is based on a silicon-controlled rectifier, or SCR. Basically it is a controlled diode that only allows the electric current to flow in one direction, and it has to be triggered to do so.

There are three leads on an SCR, the gate, anode, and cathode. The anode and cathode are just like a normal diode, but the gate allows it to function as a switch. After it is triggered, it will continue to allow current to flow until the load is removed, at which point it will reset.

We use a standard radio power switch (B1) to control our failsafe switch. The radio switch turns the SCR on; the pushbutton (B2) turns it off.

In [Figure 1](#), your battery's positive input is connected where the input is designated, and the negative end of the battery goes to the ground, represented at the bottom of the schematic. The output (positive switched voltage) to your receiver is connected to the left, and the ground is again connected to the negative output lead.



The switch works quite simply. When B1 is switched on, a current flows to the gate of the SCR, because the closed radio switch creates a circuit delivering voltage to the gate through limiting resistor R1. When the SCR sees this current, it turns on and allows current to flow through the SCR, and the LED will turn on. The LED circuit is required because it presents a small load on the SCR (-20mA) keeping the SCR activated. The LED also tells you when the circuit is on and delivering power to your model. When B2 is pressed and B1 is no longer closed, the SCR is bypassed and current flow is interrupted through the SCR while the button is down. This stops the SCR from conducting current and your model will now be off, and the LED will turn off as well.

This unit should be more than what is needed by even the International Miniature Aerobatic Club model I designed it

for (a 27% EXTRA 300S model with six digital servos). Be advised that having a high-current power switch is no longer needed since there is no significant current flowing through the mechanical switch, less than 20 mA or so.

How to use the completed unit:

- Turn on the main power switch (radio switch)
- Make sure LED is ON and that radio functions correctly
- Fly normally knowing that even if you turn off the radio switch or it fails into an open condition, the radio equipment will remain on until current is interrupted through the SCR by B2.

To power down, simply turn off the main radio switch and momentarily press the N.O button (B2) to turn the radio off. The LED should turn off confirming the radio is now off.

Parts List:

- 2 x N.O SPST Pushbuttons - RS 275-1547
- SCR - RS 276-1067 (Good for 8 amps + and 75 amps surge)
- Red LED - RS 276-330
- 220-Ohm Resistor - RS 271-1313
- 10-Ohm Resistor - RS 271-1301
- Heatshrink Tubing - Preferably clear
- 18 Gauge wire (or larger depending on your needs)
- Radio Switch (to match your radio gear plugs)

We hope that this project proves popular and useful; it is a much more reliable alternative to the outdated mechanical power switch. For more information please visit www.Anderson-Aurand.com.

All circuits presented are designed by Ken Anderson and are 100% original work they may be published and reprinted at any time.

Editor's note: From an electronics standpoint, this switch is probably much more reliable than the mechanical switches we normally use. But, as with anything having to do with your radio equipment, use this with caution. Careful placement of the on and off switches is a must to prevent inadvertently turning off your radio. And, as usual, if you understand enough about electronics to understand the article, you are probably okay to try it. If this article was Greek to you (my apologies to anyone who speaks that wonderful language) you should **stay away and not try this under any circumstances!**

CLASSIFIED

[Mile Hi R/C Official Wear - Winter Jackets](#)




Prices are as follows: S-XL \$60.00; 2XL \$61.50; 3XL \$63.00; 4X\$64.50; 5XL \$66.00 Prices do not include tax.

Winter jackets have your first name and AMA number on the front and the club logo on the back. The jackets appear to run on the small size so we recommend ordering one size larger than you normally wear.

Do you have other embroidery needs, Contact Phil, He can take care of all of your customized embroidery needs.

Contact Phillip Kenney
(303)369-7044
pkenney17@sprintmail.com

[Mile Hi R/C Official Wear](#)

-  Hats: Summer Edition (Mesh on top for venting) Blue, Club Logo up front \$12.00 Winter Edition (full twill) Blue with Club Logo up front \$12.00
-  3" Patches \$5.00
-  All Items sold at Club Meeting!!

[Javelin II ARF manufactured by Cermak](#)

New in the box. Uses a .45 - .50 size engine and is great for aerobatics. \$100.

Contact Jim Rogers
303-977-1313

Wanted To Buy - New or used SPACE WALKER - ARF

1/4 scale. They have been discontinued.

I am currently a member of Love-Air - Colorado .

Contact Ted Wahler
(970)667-7110

Editor's note

My email address for any submissions is adamdb@juno.com. If you have a new plane picture, a building tip, an item to sell, or anything else that might be of interest to your fellow club members, please let me know! Also, if you have sold any of the items or want to update any of the items currently shown in the classifieds, please let me know so I can make the appropriate changes.

These local businesses support our club through donations and discounts on material for the club. Please show your appreciation of by giving them your business.

	<p><i>Action R/C Aircraft</i> 1477 Carr St. Lakewood, CO 80215 (303) 233-6275</p>
	<p><i>Air Scharnell</i> 17908-A Cottonwood Dr. Parker, CO 80134 (303) 617-9777</p>
	<p><i>Blue Yonder Hobbies</i> 2350 S. Chambers Aurora, CO 80014 (303) 337-6887</p>
	<p><i>Colpar Hobbies</i> 804 S. Havana Aurora, CO 80012 (303) 341-0414</p>
	<p><i>Rocky Mountain R/C Hobbies</i> 5435 Boatworks Drive Littleton, CO 80123 (303) 804-0470</p>